



MOUNTAIN MODERN

A MILL VALLEY COUPLE CREATE A MODERN SKI RETREAT IN THE SIERRAS WITH THE HELP OF A SAN FRANCISCO INTERIOR DESIGNER AND OAKLAND-BASED ARCHITECT

TEXT BY JENNIE NUNN | PHOTOGRAPHY BY DAVID DUNCAN LIVINGSTON





D

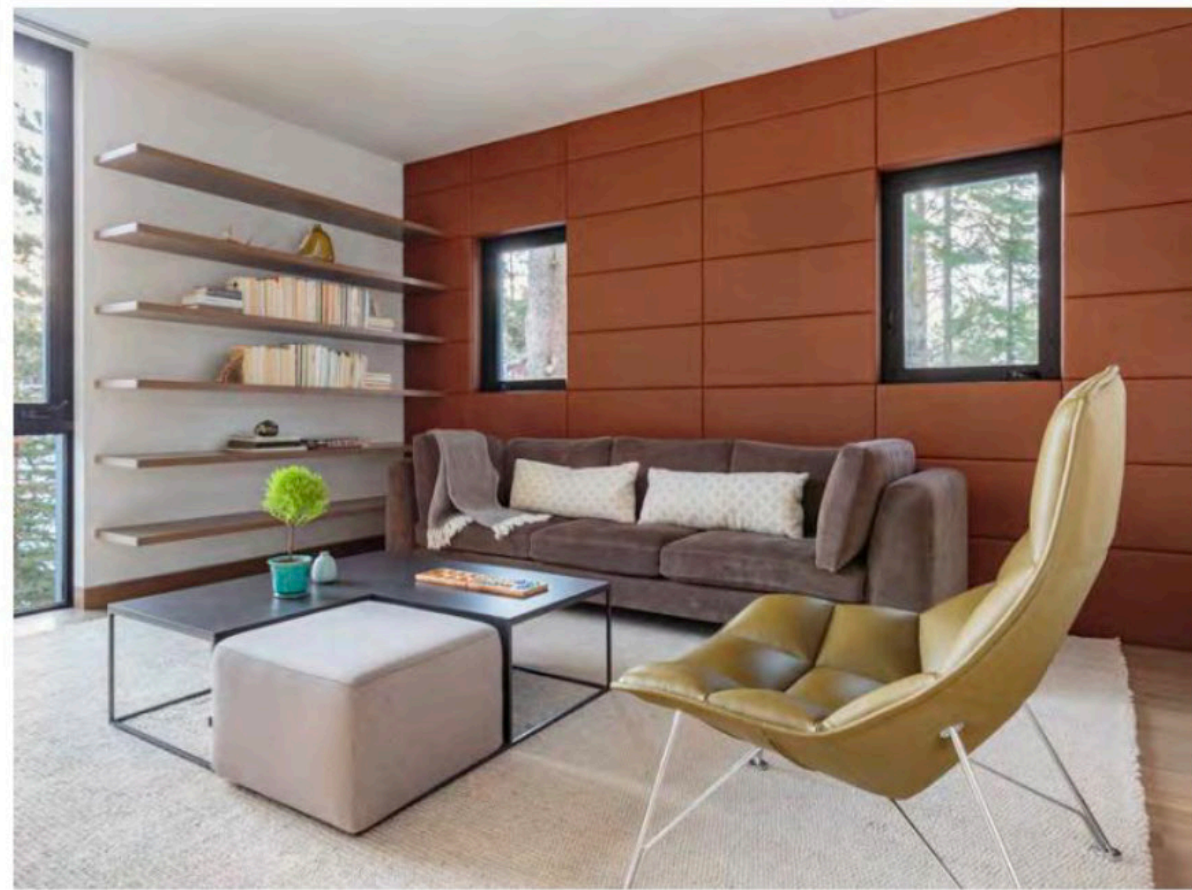
ESIGNING A MODERN SKI HIDEAWAY situated along Sugar Bowl Ski Resort in Northern California for Mill Valley couple Phil and Robin Sanderson and their four children just in time for Thanksgiving involved one major thing: a snowcat. “We really plotted carefully,” says longtime friend and interior

designer Lisa Odyniec of eponymous San Francisco-based design firm, Lisa Odyniec Design, who worked on the project with colleagues Kristina Hoglund Farber and Alissa Lillie. “The most difficult thing about this project was getting items to the site as there were giant sectionals and a couple of sofas and things that we had to snowcat in, but it was so rewarding.”

The Sandersons, who initially owned the site for several years before building, (used by the family during winters for snow camping in a real igloo), wanted to create a quiet, tranquil second home for family gatherings, ski trips, and entertaining. “It’s not a big site, but the rooms feel very spacious,” adds Odyniec of the three-story, four bedroom residence with a gabion wall made of Sierra Granite, concrete floors with radiant heating,

ABOVE A gabion wall extends from the outside into the living room. “The Gabion Wall system has been around for a very long time,” says Becker. “I was exposed to it through architects Herzog & de Meuron Architects out of Switzerland. They designed the Dominus Estate in Yountville and that age stuck with me for the Sanderson Home. I wanted to provide a stone element but I also wanted it to be uniquely different to all of the other ski hones in the village.” **LEFT** Artwork by Stephen Galloway hangs on the wall, while an industrial-style chandelier hangs over the dining table. The clean-lined kitchen serves as a backdrop for impressive mountain views.





high-tech tinted windows for privacy, and an outdoor Jacuzzi tub and shower. “They are really sort of no-fuss, and they didn’t want it to be showy. We used quiet texture and tones so that the mountain outside really comes through.” Odyniec also layered the space with hints of significant personal touches made by the couple’s artist friends such as a custom, live-edge Redwood dining table by Lawrence Gandsey, and artwork by Stephen Galloway.

In the living room, framed by an impressive gabion wall designed by Oakland architect Mark Becker of Mark Becker Incorporated (who collaborated with Odyniec on the interior architecture including cabinetry, beds, and ski room), a custom sectional sofa is paired with lounge chairs by Holly Hunt, and an 11-by-16 wool-and-silk area rug by Niba. The adjacent dining room features a custom, Redwood table, Knoll Saarinen Executive Armless Chairs, and a branch-like, 9-bubble chandelier by Lindsey Adelman.

CLOCKWISE LEFT TO RIGHT A modern bunk room is ideal for the children, while the ski room with radiant heated floors neatly houses skis when not in use. The cozy, library-like study is defined by an inventive leather wall. **OPPOSITE** The bathroom is clad in calming earth tones. “We wanted to use quiet textures and tones,” says Odyniec.



"It's unique because it has so much glazing and it really is a treehouse perch, so it is spatially an interesting experience," says Odyniec. "It is not a big space, so we kept the lines of the bed low, and built it in to be part of the cabinetry. Also, we kept the furniture minimal, not to distract from the view. We placed a lot of emphasis on the horizontal elements of the room, for example, long low horizontal elements like the headboard."

LEFT "The Master Bath space is very horizontal in design, and we had all of the stone run horizontally, to emulate the rock layers/strata of the Sierra," adds Odyniec. "It is meant to be subtle, but a bit luxurious."

For the couple, both avid athletes and cooks, the kitchen design was also crucial. "They didn't want a white kitchen, but they wanted a light kitchen," says Odyniec of the space with views of Sugar Bowl's Mt. Disney and Crow's Nest Peak, appointed with a Gaggenau range, a 10'6" Neolith island top, and custom, pull-free cabinets to further frame the outside view. "They were very articulate about where items would be stored. The idea was to keep surfaces clear, even of joint lines. Robin cares deeply about health and environmental issues and it is apparent in the way she runs the kitchen. I think the clean lines in the kitchen are also a function of the way Robin approaches cooking and life.

She is efficient and doesn't like to waste resources." The home, now a year-round escape for the busy family, has proven to fulfill all their needs including a place for the children to make crafts and projects, quiet spaces for reading and relaxing, and a warm and inviting refuge after a long day at play outdoors or skiing. "I love that there's no jarring space and it flows really nicely and all of the interiors work together," adds Odyniec. "There's a connection between all the rooms. It doesn't feel like a hotel, and we brought in things that meant a lot to the client, like the dining table and the artwork. If I could have a like project every year, I would say 'yes!' It was such a great experience." **CH**